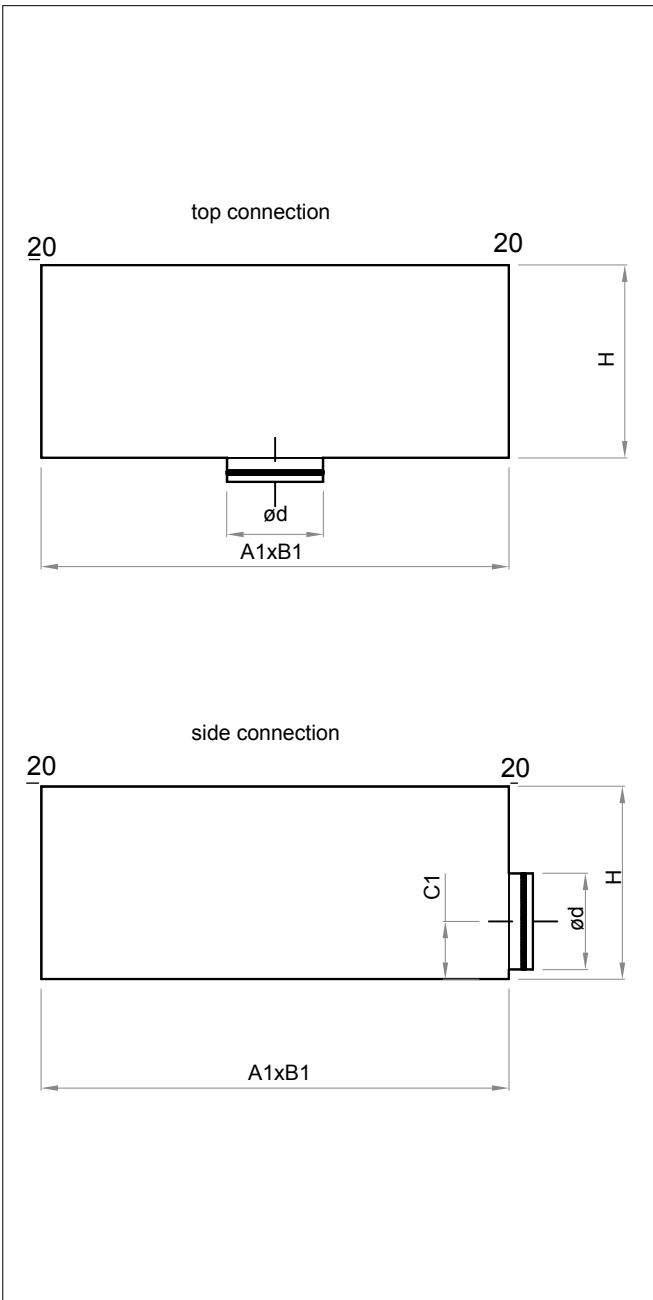


# 6.3 SR/NSCP/DZ

## expansion boxes for diffusers NSCP/DZ



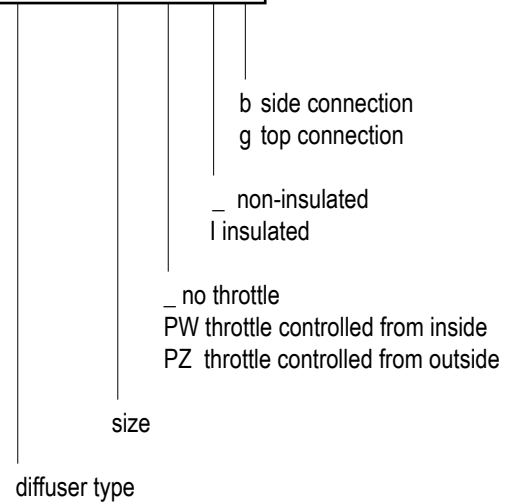
Expansion boxes can be connected to the ventilation installation through the side or top.

Boxes can be thermally and acoustically insulated from the inside by K-Flex rubber mat.

Upon customer's request we can make other types of expansion boxes accordingly to provided drawings

### ORDER REFERENCE

**SR / NSCP - 200 - PZ - I - g**



### STANDARD SIZES

SR/NSCP	100	125	160	200
for NSCP/DZ	450x200	550x250	550x250	750x300
A1 [mm]	450	550	550	750
B1 [mm]	200	250	250	300
C1 [mm]	80	100	130	150
H [mm] top	225	250	285	325
H [mm] side	300	325	360	400
Ød [mm]	98	123	158	198

### DESCRIPTION

SR/NSC are expansion boxes for NSCP/DZ diffusers. They stabilize the airflow and ensure uniform air supply to the diffuser. Expansion boxes connect diffusers with ventilation installation. They are made of zinc-coated sheet, joint by non-welded Click-Clock connection. In standard expansion boxes are equipped on the ferrule with machine crimped rubber gasket.